

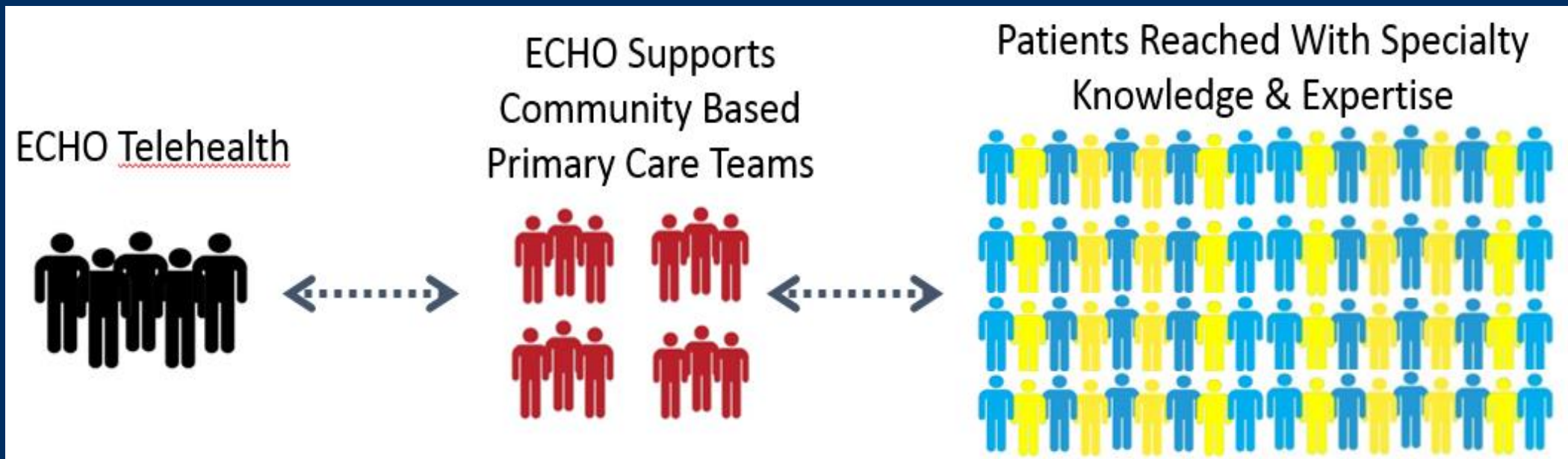


# Project ECHO Nevada: Telementoring Providers to Help Improve Antimicrobial Stewardship

August 15, 2017



# Comparing Telemedicine and the ECHO Model



# Anytime, Anywhere, Any Device



# Project ECHO New Mexico

- 2003 - Sanjeev Arora identified the need to treat patients with Hepatitis C living in remote NM communities
- Envisioned the use of videoconferencing to create a knowledge network of like providers
- Received a Health Care Innovation award from RWJ Foundation
- Demonstrated improved provider satisfaction and self-efficacy
- Proved identical outcomes between care by rural PCPs + ECHO and ordinary care at academic medical center
- Published results in NEJM, June, 2011
- >100 ECHO hubs world-wide

# Project ECHO Nevada Background



- Planning began in late 2010
- Rural road trips/site visits/needs assessment during July and August 2011
- First clinic launched April 2012 – Diabetes ECHO
- Currently 11 active ECHO clinics + 3 inactive

# Project ECHO Nevada Today

1,900+

CME/CE credits  
provided for FREE in  
Nevada

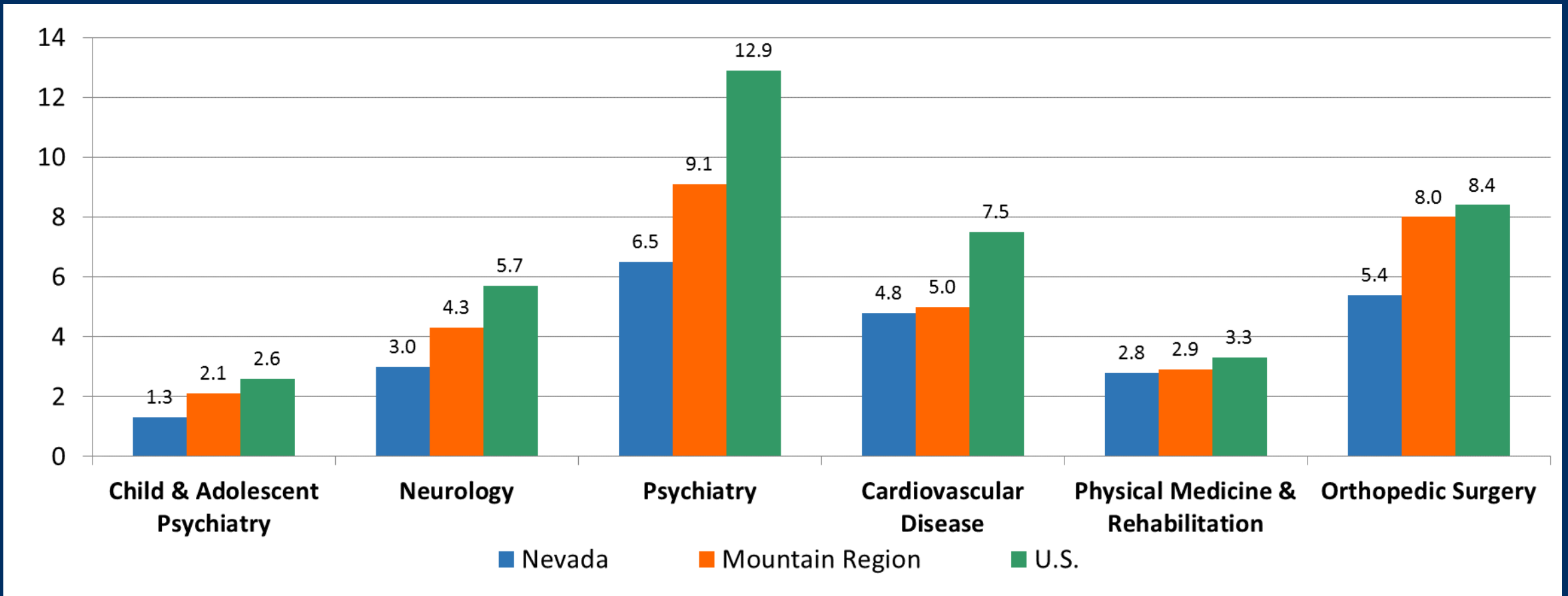
50+

Participating sites  
in Nevada

350+

Participating medical  
professionals  
including more than  
165 primary care  
providers

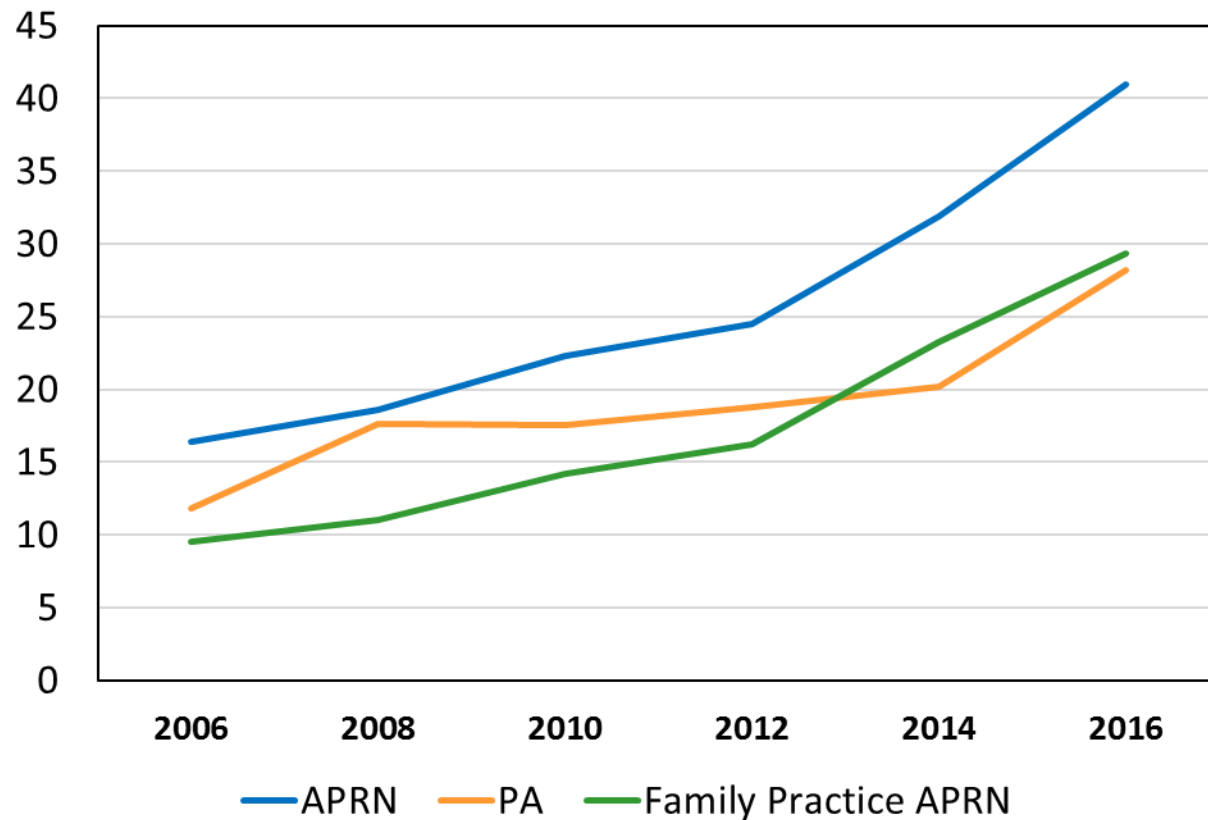
# Medical and Surgical Specialties Number of MDs per 100,000 Population – 2013



Source: AMA. *Physician Characteristics and Distribution in the U.S.* (2015).

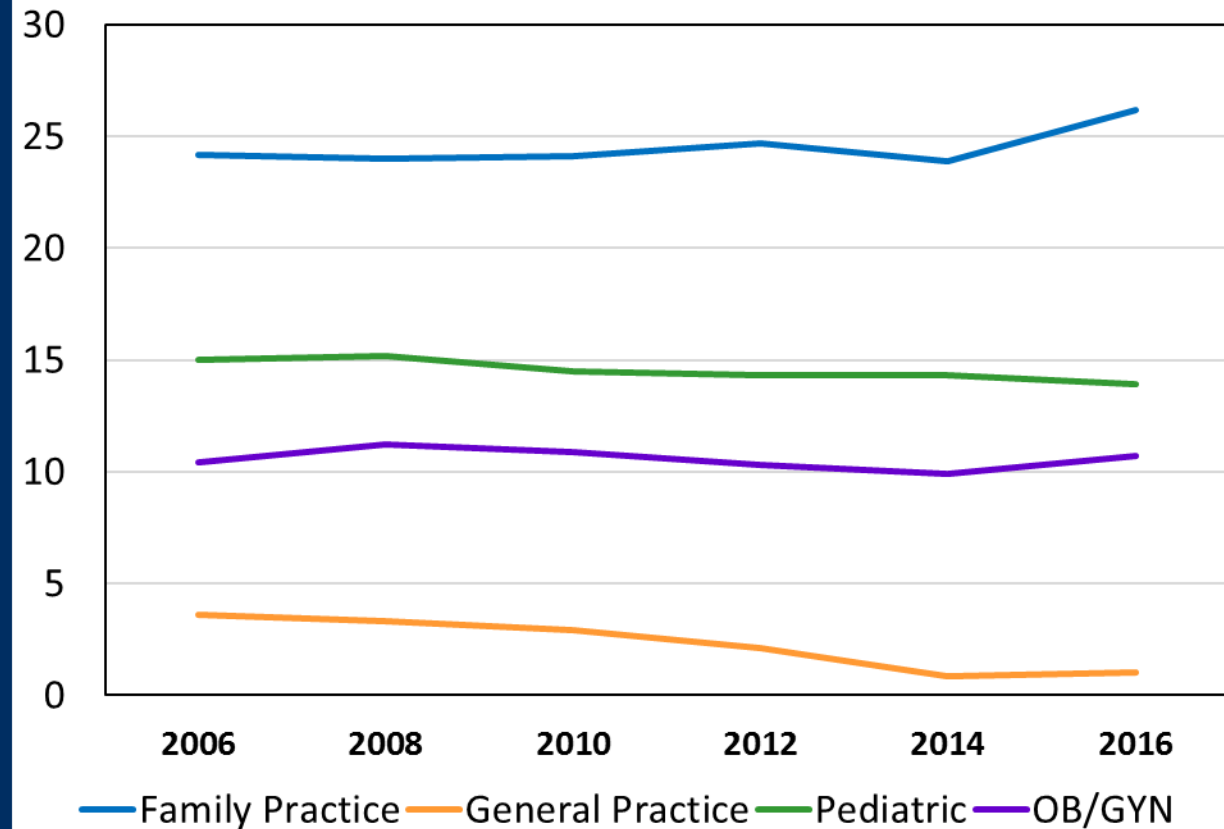
# More primary care provided by a lower licensed workforce

## APRNs and PAs in Nevada per 100,000 Population



Sources: Nevada State Board of Medical Examiners (2016). Nevada State Board of Nursing (2016).

## MDs and DOs in Nevada per 100,000 Population



Sources: AMA. *Physician Characteristics and Distribution in the U.S.* (2015). Unpublished data from the Nevada State Board of Medical Examiners (2016).



# Project ECHO Nevada Clinics for Primary Care Providers

- Antibiotic Stewardship
- Behavioral Health in Primary Care\*
- Diabetes/General Endocrine (x2)\*
- Gastroenterology
- Geriatrics\*
- Medication Assisted Therapy (MAT) (x2)\*
- Pain Management (x2)\*
- Public Health
- Sports Medicine

\*behavioral health specialist(s)  
on interdisciplinary team

# Contact

Chris Marchand, MPH

Program Coordinator, Project ECHO Nevada

(775) 682-8476

cmarchand@med.unr.edu



@ECHONevada



/ECHONevada